

S.O.S10™ S.O.S20™ S.O.S15™ S.O.S25™

ACBS GMS PBS

Description

Food for special medical purposes.

S.O.S. is an age specific range of pre-measured neutral tasting carbohydrate powder drink mixes.

Indications

S.O.S. is for use as an emergency regimen in the dietary management of inborn errors of metabolism.

Product	Sachet size	Make up to final volume	Carbohydrate concentration provided	Recommended age group*
S.O.S10™	21g	200ml	10%	Birth - 1 year
S.O.S15™	31g	200ml	15%	1 - 2 years
S.O.S20™	42g	200ml	20%	2 - 10 years
S.O.S25™	52g	200ml	25%	10 years +

Dosage and Administration

To be determined by the clinician or dietitian and is dependent on the age, body weight and medical condition of the patient.

Preparation Guidelines

For S.O.S10:



1 Clean and sterilise your infant feeding bottles in the usual way. Empty 1 x S.O.S 10 sachet into the bottle - MAKE SURE TO USE THE FULL SACHET.

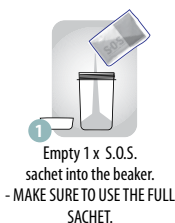


2 Make up to 200ml with cooled boiled water.



3 Replace lid and shake well until the powder is dissolved.

Once prepared the feed should be used immediately

Other S.O.S products:

Once prepared the feed should be used immediately or stored in the refrigerator and used within 24 hours.

IMPORTANT NOTICE

Must only be given to patients with proven inborn errors of metabolism under strict medical supervision.

*Age suitability can vary depending on the individual requirements of the patient.

Not for use as a sole source of nutrition.

For enteral use only.

Nutritional Information

		Per 100g	Per 200ml of S-O-S10™ (21g sachet reconstituted)	Per 200ml of S-O-S15™ (31g sachet reconstituted)	Per 200ml of S-O-S20™ (42g sachet reconstituted)	Per 200ml of S-O-S25™ (52g sachet reconstituted)
Energy	kJ	1615	339	510	678	850
	kcal	380	80	120	160	200
Fat	g	0	0	0	0	0
	of which saturates	g	0	0	0	0
Carbohydrate	g	95	20	30	40	50
	of which sugars	g	9.0	1.9	2.8	3.8
Protein	g	0	0	0	0	0
Salt	g	<0.05	<0.01	<0.015	<0.02	<0.025
Minerals						
Sodium	mg	<20	<4	<6	<8	<10
	mmol	<0.9	<0.2	<0.3	<0.4	<0.5
Chloride	mg	<40	<8	<12	<17	<21
	mmol	<1.1	<0.2	<0.3	<0.5	<0.6
Potassium	mg	<30	<6	<9	<13	<16
	mmol	<0.8	<0.2	<0.2	<0.3	<0.4

Osmolality:

At standard dilutions, the osmolality for each product is as follows:

S-O-S10™ = 122mOsm/kg

S-O-S15™ = 189mOsm/kg

S-O-S20™ = 280mOsm/kg

S-O-S25™ = 390mOsm/kg

Pack Size/Weight**S·O·S10™**

30 x 21g e sachets = 630g

S·O·S15™

30 x 31g e sachets = 930g

S·O·S20™

30 x 42g e sachets = 1.26kg

S·O·S25™

30 x 52g e sachets = 1.56kg

Flavour

Unflavoured

Storage

Store in a cool, dry place.

Sachets are designed for single use and should be used once opened.

